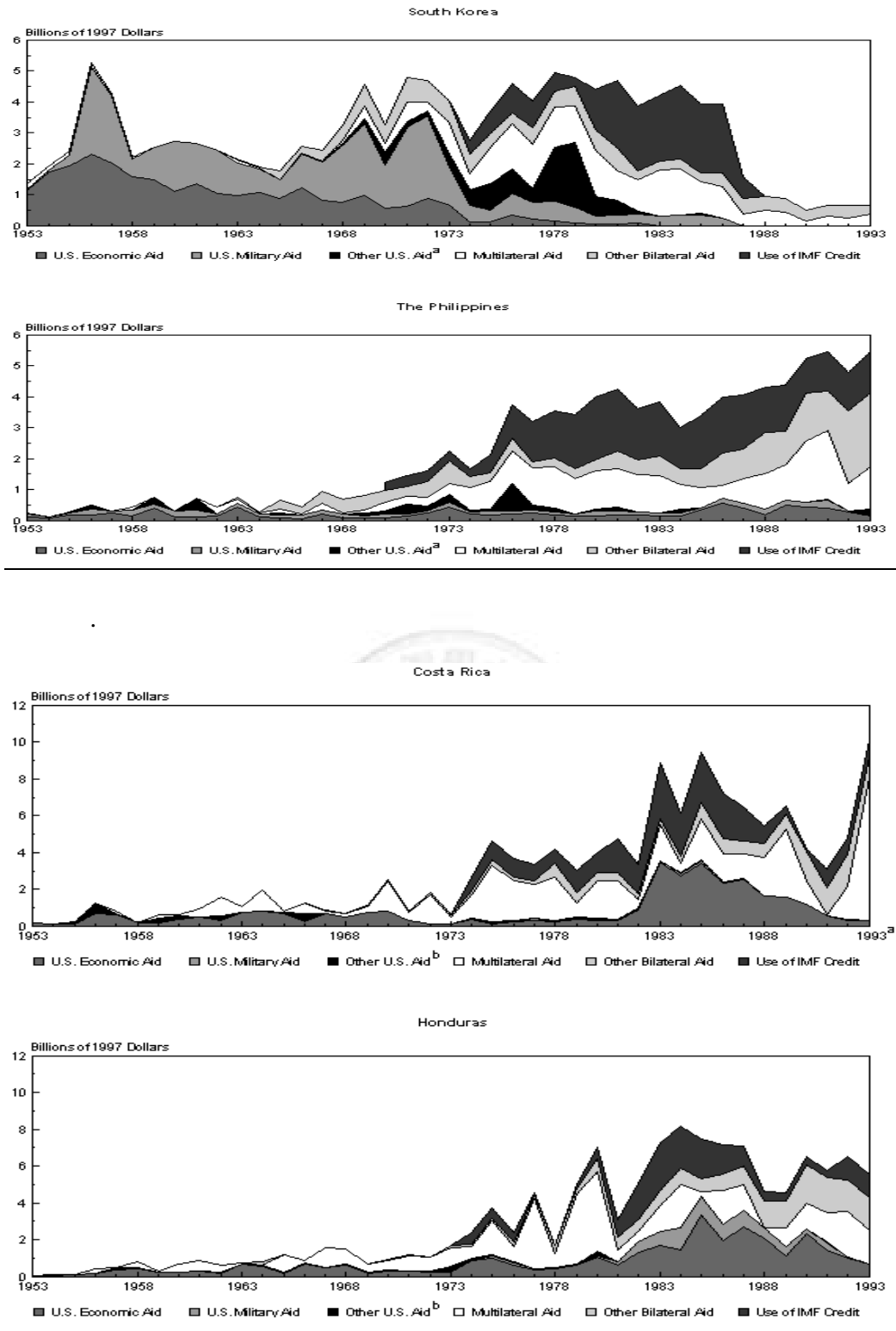


# Annex 1: South Korea, the Philippines, Costa Rica, Honduras US Aid allocations charts



## Annex 2: Benin and Burkina Faso top –ten ODA donors (2002-2004)

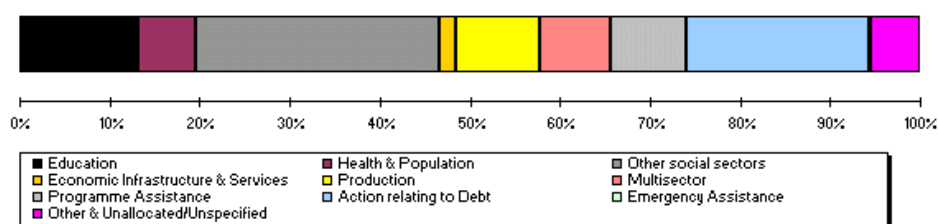
### Benin

Receipts	2002	2003	2004
Net ODA (USD million)	216	293	378
Bilateral share (gross ODA)	59%	61%	56%
Net ODA / GNI	8.1%	8.3%	9.3%
Net Private flows (USD million)	17	- 3	4

For reference	2002	2003	2004
Population (million)	6.6	6.7	6.9
GNI per capita (Atlas USD)	380	440	530

Top Ten Donors of gross ODA (2003-04 average) (USD m)	(USD m)
1 EC	70
2 France	60
3 IDA	42
4 United States	30
5 Germany	28
6 Denmark	27
7 Japan	26
8 AfDF	23
9 Netherlands	15
10 Belgium	12

Bilateral ODA by Sector (2003-04)



Sources: OECD, World Bank.

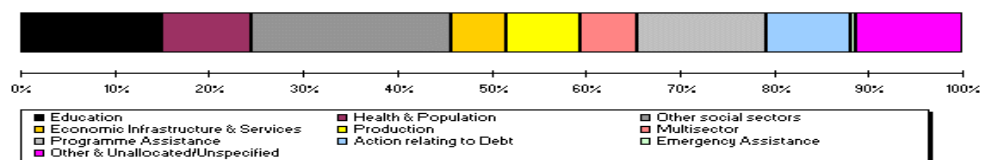
### Burkina Faso

Receipts	2002	2003	2004
Net ODA (USD million)	473	507	610
Bilateral share (gross ODA)	55%	51%	52%
Net ODA / GNI	14.8%	12.1%	12.7%
Net Private flows (USD million)	26	19	34

For reference	2002	2003	2004
Population (million)	11.8	12.1	12.4
GNI per capita (Atlas USD)	250	300	360

Top Ten Donors of gross ODA (2003-04 average) (USD m)	(USD m)
1 IDA	129
2 France	90
3 EC	87
4 Netherlands	47
5 AfDF	40
6 Germany	34
7 Denmark	30
8 Switzerland	21
9 Belgium	16
10 United States	16

Bilateral ODA by Sector (2003-04)



Sources: OECD, World Bank.

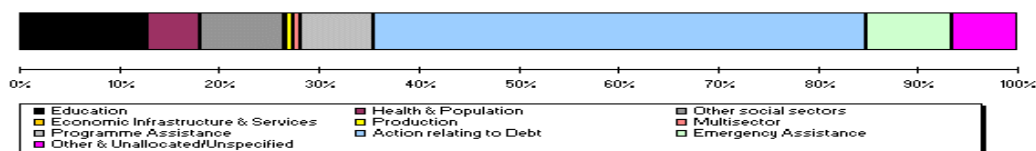
### Annex 3: Cote d'Ivoire, Ghana, and Mali top –ten ODA donors (2002-2004)

#### Côte d'Ivoire

Receipts	2002	2003	2004
Net ODA (USD million)	1 069	252	154
Bilateral share (gross ODA)	75%	80%	73%
Net ODA / GNI	9.7%	1.9%	1.1%
Net Private flows (USD million)	- 304	156	- 95
For reference	2002	2003	2004
Population (million)	16.5	16.8	17.1
GNI per capita (Atlas USD)	610	670	770

Top Ten Donors of gross ODA (2003-04 average) (USD m)	(USD m)
1 France	150
2 United States	47
3 IDA	45
4 Germany	35
5 Italy	25
6 EC	18
7 UNHCR	9
8 Canada	9
9 Netherlands	8
10 Belgium	7

Bilateral ODA by Sector (2003-04)



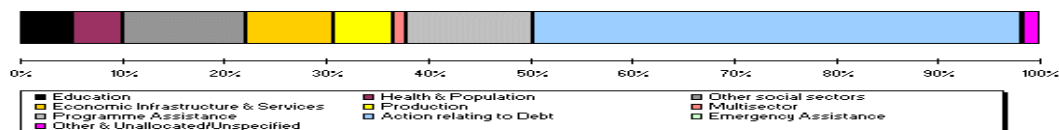
Sources: OECD, World Bank.

#### Ghana

Receipts	2002	2003	2004
Net ODA (USD million)	650	954	1 358
Bilateral share (gross ODA)	58%	48%	76%
Net ODA / GNI	10.8%	12.8%	16.0%
Net Private flows (USD million)	- 19	285	749
For reference	2002	2003	2004
Population (million)	20.3	20.7	21.1
GNI per capita (Atlas USD)	270	320	380

Top Ten Donors of gross ODA (2003-04 average) (USD m)	(USD m)
1 Japan	525
2 IDA	317
3 United Kingdom	200
4 Netherlands	109
5 United States	82
6 EC	75
7 AfDF	62
8 Germany	60
9 Denmark	58
10 SAF & ESAF (IMF)	56

Bilateral ODA by Sector (2003-04)



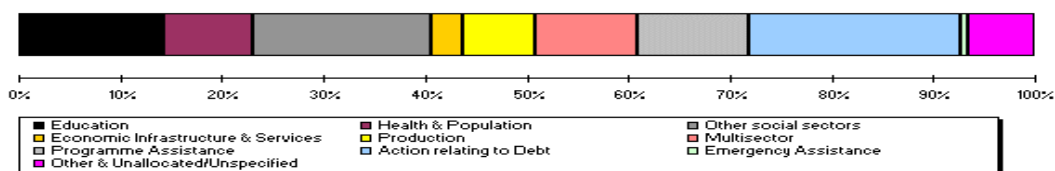
Sources: OECD, World Bank.

#### Mali

Receipts	2002	2003	2004
Net ODA (USD million)	467	543	567
Bilateral share (gross ODA)	60%	47%	58%
Net ODA / GNI	15.0%	13.0%	12.2%
Net Private flows (USD million)	- 135	20	- 25
For reference	2002	2003	2004
Population (million)	11.4	11.7	11.9
GNI per capita (Atlas USD)	240	300	360

Top Ten Donors of gross ODA (2003-04 average) (USD m)	(USD m)
1 EC	113
2 IDA	106
3 France	100
4 Netherlands	53
5 United States	51
6 Japan	50
7 AfDF	47
8 Canada	35
9 Germany	25
10 Arab Agencies	17

Bilateral ODA by Sector (2003-04)

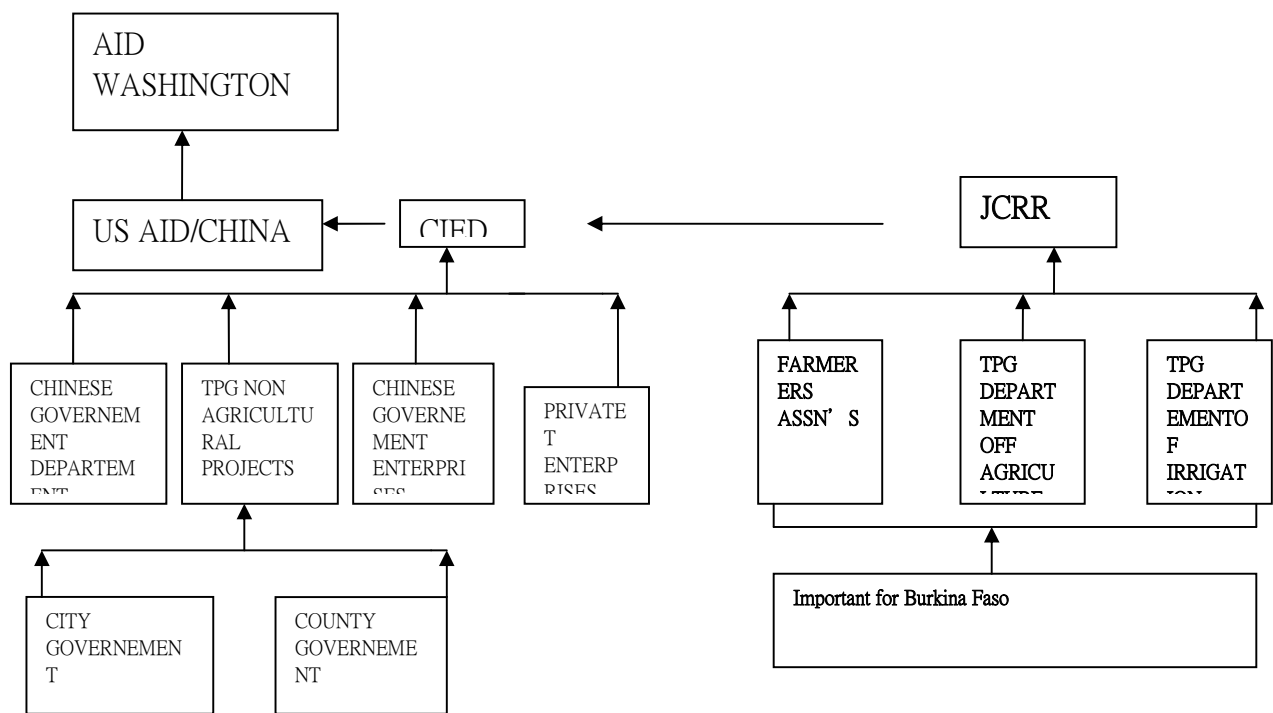


Sources: OECD, World Bank.

**Annex 4: Countries General evaluation table and The R.O.C (Taiwan) aid institution flow chart.**

Group 1 Countries	NR	ID	CL	GQ	JSAI	AQ	HC	ED
Taiwan	0.3	0.5	1	1	1	1	1	1
South Korea	0.3	0.6	1	1	1	1	1	1
Philippines	0.7	0.5	1	0	0	0.3	0.5	0.8
Costa Rica	0.4	0.7	0	1	0	0.8	1	1
Honduras	0.7	0.2	0	0	0	0.2	0.5	0.6
Group 2 Countries								
Burkina Faso	0.1	0.1	0	0.2	0	0.1	0.2	0.2
Benin	0.4	0.3	0	0.1	0	0.3	0.2	0.2
Ghana	0.8	0.5	0	0.2	0	0.3	0.2	0.4
Cote D'Ivoire	0.8	0.3	0	0.3	0	0.3	0.2	0.2
Mali	0.1	0.1	0	0.3	0	0.3	0.2	0.2

**Note: NR = Initial Conditions; ID = Initial Development CL= Colonial Legacy; JSAI = Joint Semi Autonomous Institution; H C = Human Capital as defined in this thesis; ED = Economic Development.**



**Source: from Jacoby, 1966, 65. Note: TPG means Taiwan Provincial Government. CIED stands for Council for International Economic Cooperation, JCRR means Joint Commission on Rural Reconstruction ASSN'S stands for associations**

## **Annex 5: ICDF Program Operation In Burkina Faso.**

### Technical Mission

#### Bagre Right Bank Farmland Reclamation Project

This project is developing 1,200 hectares of land through reclamation and irrigation engineering on the right bank of the Nakambe River. The technical mission has also provided assistance in farmer training, in rice cultivation and extension, and in creating core production and marketing teams. In 2004, the mission built 900m of main ditches and 600m of concrete branch ditches, 1,400m of drainage ditches, two divider boxes, one bridge, and a 2,200m feeder road. The mission also assisted in cultivating 1,200 ha of existing fields.

#### Upland Rice Cultivation Extension Project

The technical mission is developing 1,800 hectares of farmland. In cooperation with the Burkina Faso Ministry of Agriculture, upland rice cultivation is now being extended to 4,200 ha. In 2004, the mission built 2,000 m of main ditches, 12,800 m of cofferdam road, 11 divider boxes, and 34,400 m of feeder road. Technical assistance in rice extension was provided to farmers on 840 ha.

### Medical Mission

The medical mission is providing services at Friendship Hospital, offering knowledge and technology transfers to boost the medical standards of the hospital. In 2004, the hospital assisted approximately 6,450 patients in internal medicine, gynecology, obstetrics, anesthetics and surgery. Regular and irregular outreach medical services were provided, and a free service program has been conducted every two months in eight villages near Ougadougou. Conferences and medical training courses are also being coordinated to develop human resources at Friendship Hospital.

### Technical Assistance

#### Food Processing Project

This project is assisting in the development of the food processing industry by providing technology to improve processing, extend the shelf life of agricultural products, and increase the benefit of farm goods.

#### Biomass Application Research and Demonstration Project.

The TaiwanICDF is helping farmers utilize green manure and biomass (plant materials and animal waste), reduce production costs, raise output and achieve environmental sustainability.

### Investment and Lending

#### Rural Credit Project

This project is providing loans to farmers and women to improve business activities increase local employment and reduce rural poverty. The allocation of the loan is as follows: (1) US\$500,000 is being disbursed to women's groups and; (2) US\$2 million is being used to finance livestock procurement, agricultural equipment and plantation related materials.<sup>1</sup>

---

<sup>1</sup> Confer ICDF, country program, Africa (Burkina Faso) [http://www.icdf.org.tw/english/e\\_co\\_contact.asp?coarea=01&country=1](http://www.icdf.org.tw/english/e_co_contact.asp?coarea=01&country=1)